

User Manual

CENTRAL MANAGEMENT SYSTEM of H.264 DIGITAL VIDEO RECORDER



TABLE of CONTENTS

I.	SPECIFICATION	3
II.	HARDWARE REQUIREMENTS	5
	A. MINIMUM REQUIREMENTS	5
	B. SUGGESTED REQUIREMENTS	5
III.	Program Install and Uninstall	6
IV.	CENTRAL MANAGEMENT SYSTEM SETUP	8
	A. DVR SETUP	8
	B. GROUP SETUP	11
	B. GROUP SETUP	11
	C. SCHEDULE SETUP	15
	D. SYSTEM SETUP	17
	E. USER SETUP	20
V.	REAL-TIME MONITOR	21
	A. REAL-TIME IMAGE	21
	B. BUTTON INSTRUCTION of REAL-TIME IMAGE	22
VI.	EMERGENCY RECORD & DATA BACKUP	25
	A. EMERGENCY RECORD	25
	B. DATA BACKUP	28
VII.	E-MAP	30
	A. E-Map Monitor	31
	B. Map Tree	31
	C. Event List	31
	D. Live Monitor	31
	E. E-Map Setup	32
VIII.	VIDEO PLAYBACK	37
	A. VIDEO PLAYBACK	37
	B. EXPORT IMAGE	45
IX.	DIGITAL ZOOM	46
X.	REMOTE CONTROL	47
	APPENDIX A: GRAPHIC CARD TEST TABLE	56

PREFACE

DVR Central Management System (CMS) is a 36 views recording software which specific supports our H.264 and 04CH MPEG-4 DVR (Digital Video Recorder). This software can provide real-time monitor, record the video on PC and then playback the recorded video to the user.

Moreover, the user can also setup the software recording method for the specific circumstances and performs video playback via Time and Event Search.

I. SPECIFICATION

Supported DVR Module: H.264 and 04CH MPEG-4 DVR

Main Features:

1. Live-time, recording and playback functions available
2. Image setup under group mode
3. Playback DVR recording data by time and event search
4. Support DVR system setup
5. E-Map
6. RemoteAP
7. RemoteLite
8. WebServer
9. Dual-Monitor

Resolution	
Supported Resolution	1280*1024 and 1024*768
Live	
Security	Login Username and Password
Monitoring Mode	1 , 4 , 9 , 16 , 36
Display Mode	Group
Audio Out	Yes
Digital Zoom Control	Yes
PTZ Control	Yes
Snapshot	Yes
I Frame Only	Yes
View Title	Yes

Playback	
Monitoring Mode	1 , 4 , 9 , 16 , 36
Display Mode	DVR Playback
Audio Out	Yes
Digital Zoom Control	Yes
Snapshot	Yes
Playback Mode	4 Modes
	Mode1 : DVR Search
	Mode2 : Download File
	Mode3 : Emergency Record
	Mode4 : Synchronization Record
Record	
Download DVR Recorded Data	Yes
Live Emergency Record	Yes
Time-Point Backup	Schedule
Event	
DVR Event Log	Record & Playback
CMS Event Log	Yes
System Setup	
Security	2-level
Group Setup	Yes
Time-Point Schedule Setup	Yes
User Setup	Two Groups. "admin" and "guest"
Multi-Language	Yes
Version Information	Yes
E-MAP	
Image View	Live View Pop-up, Status Remind
E-Map Setup	Tree Mode Setup, Pull and Drag the Device
RemoteAP	
Monitoring Mode	1, 4, 9, 16, 36
Playback	DVR Playback
CMS Setup	Group Setup, DVR connecting Setup, Recording Setup
Remote Lite	
Monitoring Mode	1, 4, 9, 16
Web Server	
Monitoring Mode	1, 4, 9, 16, 36
Dual Monitor	
Monitor Setup	Live, Multi-Live, Playback and E-Map
Monitoring Mode	1, 4, 9, 16, 36

II. HARDWARE REQUIREMENTS

A. MINIMUM REQUIREMENTS


- i.** CPU: Intel Core 2 Duo 2.20G
- ii.** Memory: 1GB
- iii.** VGA Card: 128MB External Graphic Card
- iv.** Monitor Resolution: 1280 x 1024, 1024 x 768 (This user manual is made by 1280 x 1024 Resolution.)
- v.** OS: Windows Vista/ XP / 2000

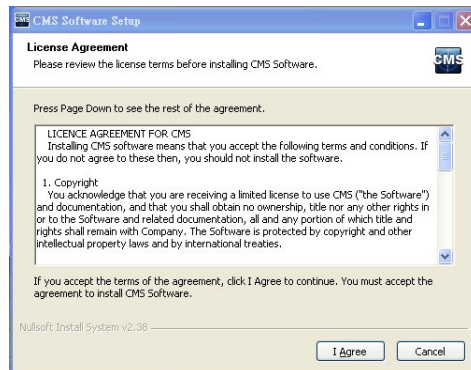
B. SUGGESTED REQUIREMENTS

- i.** CPU: Intel Core 2 Quad CPU Q8200 2.33G or higher
- ii.** Memory: 2GB or higher
- iii.** VGA card: 256MB External Graphic Card or higher
- iv.** Monitor Resolution: 1280 x 1024, 1024 x 768.
- v.** OS: Windows Vista/ XP / 2000

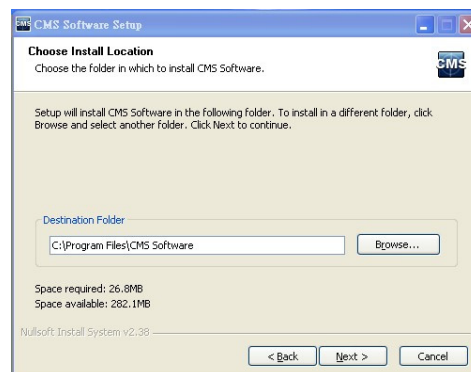
III. Program Install and Uninstall

A. Program Install

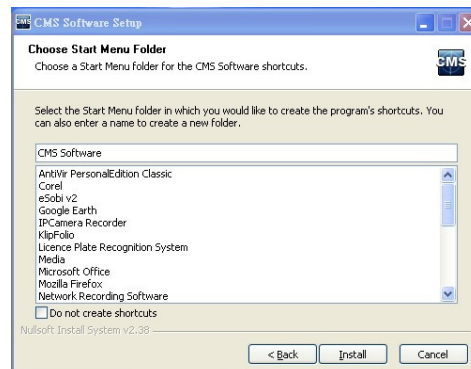
- i. To install CMS SOFTWARE, please double click .
- ii. License Agreement. Select “I Agree”, Go to the next step.



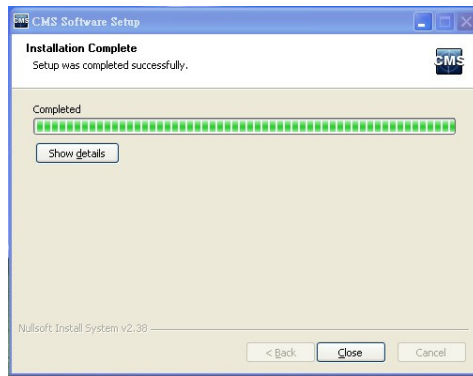
- iii. Select the directory for CMS SOFTWARE. The default directory is "C:\Program Files\CMS Software ". Select “Next”.



- iv. Set up the name of the program folder. The default is “ CMS Software ”. Click “Install” to start the installation.



- v. When finish, click “Close” to close the procedure of the installation.



- vi. To start the program, select “Start” →”Program”→”CMS Software ”→”CMS ”.



B. Uninstall

- i. To uninstall the program, select “Start” → ”Program” →”CMS Software”→ ”Uninstall” to remove the program.





IV. CENTRAL MANAGEMENT SYSTEM SETUP

Please setup Central Management System step by step according to the following instructions.

NOTE: Select "Start" → "Program" → "CMS Software" → "CMS" to operate CMS software and fill in the user name and password within the pop up login dialogue box. Both user name and password are admin.




A. DVR SETUP

- i. Click  button to enter administrator page, and select  tag.

- ii. Among DVR Setup page, click  button to add DVR, and then fill in the information about the DVR(s) which is going to connect.

- iii. After finish adding DVR(s), DVR LIST block will display the new DVR(s) which just add.



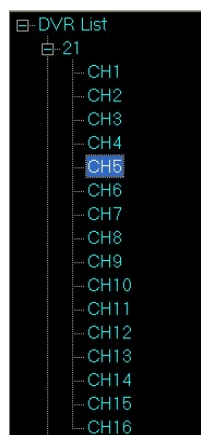
- iv. After complete the above setting, click  button to perform the connection. If it is success for connection, the screen will pop-up the success information dialog box. (However, if it is failure for connection, the screen will pop-up the failure information dialog box.)



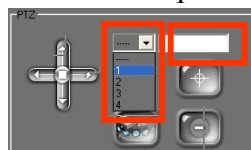
NOTE: If the user wants to delete the connected DVR, select the DVR first

and then click  button to delete the DVR.

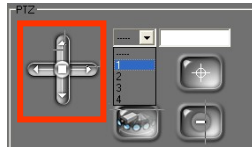
- v. If the connected camera within the DVR List includes PTZ function, PTZ preset point can be setup via operating PTZ block. The operating steps are presented in the following,
- a. Spread up the DVR within the DVR List, double-click the camera which includes PTZ function.



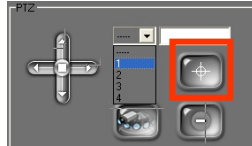
- b. Click the drop down list of preset point and change the name of it.




- c. Then, use the navigation key to adjust the preset point position.



- d. Finally, click the preset point button to complete the setting.



B. GROUP SETUP

- i. Click  button to enter administrator page, and select



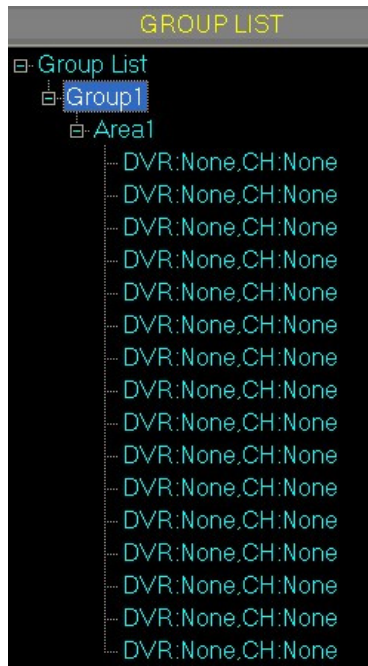
- ii. Within Group Setup page, right click of the mouse on the Group List and select Add Group option. The new add Group 1 will display under the Group List.



- iii. Right-click the button of the mouse and select Add Area option. The New Added “Area 1” will display within Group 1.



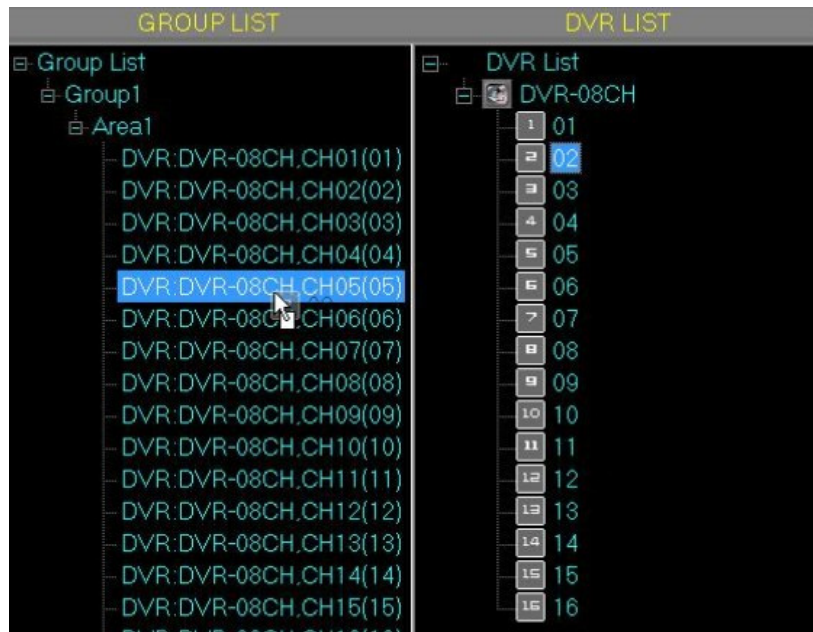
- iv. Click Area 1 to expand this area. (NOTE: Each area can display 16 views.)



- v. Finally, add the DVR channel into the new created Area. There are “Mouse Drag”, “View All” and “Individual Select” three methods.

a. Mouse Drag

- a-1. Select the DVR channel which is going to add into the Area View.
- a-2. Drag the mouse from the selected channel to the Area view.
As the following example,



b. View All

- b-1. Select the Area first and then right-click the button of the mouse on the DVR. After that, select View All option.

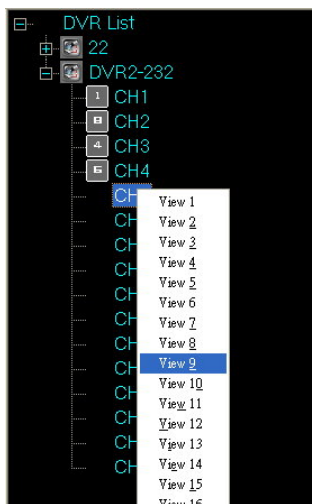


- b-2. Click the Area which is mentioned above and it will display all 16CH of DVR.

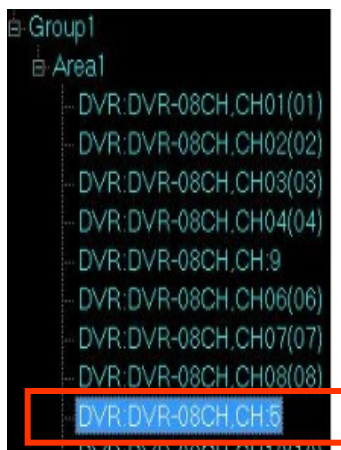



c. Individual Select

- c-1. Click DVR to expand all the DVR channels ◦
- c-2. Right click the button of the mouse to select the channel which is going to add to the Area, and select the display view of the Area.



- c-3. After complete the selection, the Area view will display the DVR channel which just mentioned above.



- v. If the user wants the Area View display All Frame, the user can click the View No. within the All Frame block to adjust the Real-Time display. Moreover, press  button can switch to other views.
(NOTE: Only display I Frame can increase the PC efficiency.)

Display All Frame		Ch Name
<input checked="" type="checkbox"/> View1		View1
<input type="checkbox"/> View2		View2
<input type="checkbox"/> View3		View3
<input type="checkbox"/> View4		View4
<input checked="" type="checkbox"/> View5		View5
<input type="checkbox"/> View6		View6
<input type="checkbox"/> View7		View7
<input checked="" type="checkbox"/> View8		View8
<input type="checkbox"/> View9		View9
<input checked="" type="checkbox"/> View10		View10
<input type="checkbox"/> View11		View11
<input checked="" type="checkbox"/> View12		View12
<input checked="" type="checkbox"/> View13		View13
<input type="checkbox"/> View14		View14
<input type="checkbox"/> View15		View15
<input type="checkbox"/> View16		View16
<input type="button" value="ALL"/> <input type="button" value="None"/>		<input type="button" value=""/> >>

C. SCHEDULE SETUP

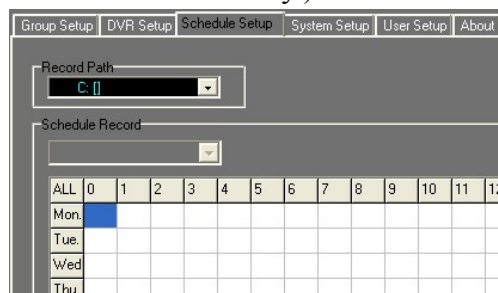


- i. Click button enter to administrator page and then click



tag.

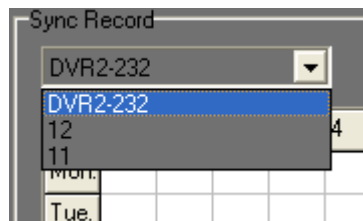
- ii. Select the record path when operate Emergency record and Synchronization record. Moreover, click “Use Overlay” to decide to use overlay play mode or not (NOTE: Click “Use Overlay” can increase PC efficiency.).



- iii. Moreover, within system setup, the user can setup the time schedule of Sync Record as well. The setting steps are shown in the following,



- a. Regularly Sync Record Time Schedule Setup

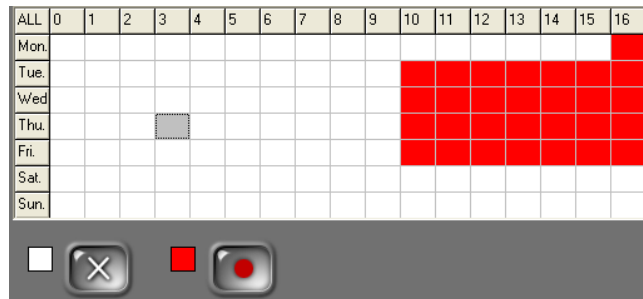
- a-1. Select the Sync Record DVR from the drop down list.



- a-2. Left-click the button of the mouse and pull the time range which is performed the Sync Record.

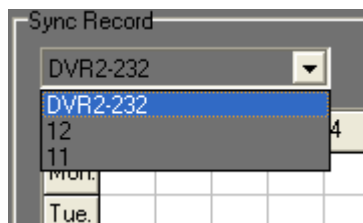
ALL	0	1	2	3	4	5	6	7	8	9	10	11	12	13	14	15	16	17
Mon.																		
Tue.																		
Wed.																		
Thu.																		
Fri.																		
Sat.																		

- a-3. Click  button to finish the time schedule setup. As the following image, (NOTE: Click  button to cancel the setup.)




b. Special-Time Sync Record Setup

- b-1. Select the Sync Record DVR from the drop down list.





- b-2. Select the Start and End Time of the DVR.



- b-3. Click  button to finish special-time setup. As the following image,

Start Date	Time	End Date	Time	Mode
2008/8/5	15	2008/8/5	17	

- iv. After complete the setup, please click  button to save the setting and press  to exit Schedule Setup page.

D. SYSTEM SETUP



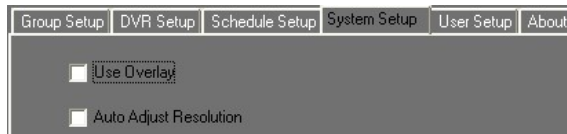
- i. Click button enter to administrator page and then click



tag.

- ii. After entry to the system setup page, the system setup related options are provided. The instructions of all the options are shown in the following.

- a. **Use Overlay:** Select “Use Overlay” can increase PC efficiency.
- b. **Auto Adjust Resolution:** Select “Auto Adjust Resolution” can alter the screen resolution automatically. **(NOTE: if the PC screen supports 1280*1024 resolution, the screen will adjust to 1280*1024 and CMS software will adjust to 1280*1024 screen resolution automatically after enable “Auto Adjust Resolution”. However, if the PC screen does not support 1280*1024, the screen will adjust to 1024*768 and CMS software screen will adjust to 1024*768 resolution automatically.)**



- c. **Default Screen Split:** The number of split screen will be displayed when CMS software is operated in the beginning.



- d. **DATE Format:** There are three kinds of date formats can be chosen to display on the view which are yyyy/mm/dd, dd/mm/yyyy and mm/dd/yyyy.




- e. **Language:** There are twelve languages can be selected which are included English, German, Czech Republic, Spanish, Finland, French, Italian, Netherlands, Poland, Portugal, Sweden, Chinese (Traditional) and Japanese.



- f. **Server:** Click Web Server or RemoteAP Server option can activate the server function. Moreover, if the Web Server is enabled, the

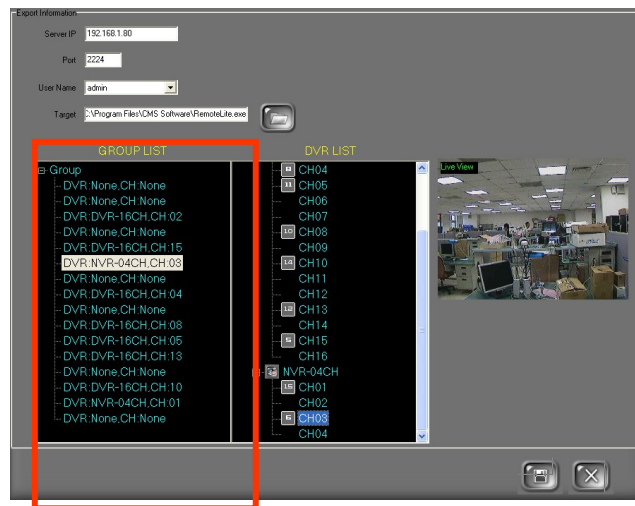
RemoteAP Server will be activated in the same time.



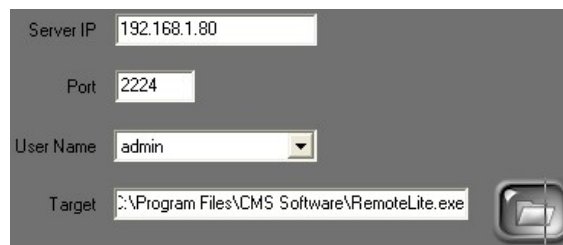
- g. **RemoteLite Application:** Click  button can export RemoteLite program.



After enter to the “Export Information” page, the user can pull the DVR channel from DVR List to the Live View of Group List. There are sixteen views can be exported.



Moreover, all the other related information about the exportation can be setup within this page, such as, Server IP, Port, User Name and the path of the remotelite program exportation.





- h. **Server Timeout:** If the user login to the remote program under the Guest authority, the remote program will cut the connection automatically when times up.



- i. **MultiMonitor:** There are Live form, Multi-Live Form, Playback Form and E-Map four options support multimonitor functions.



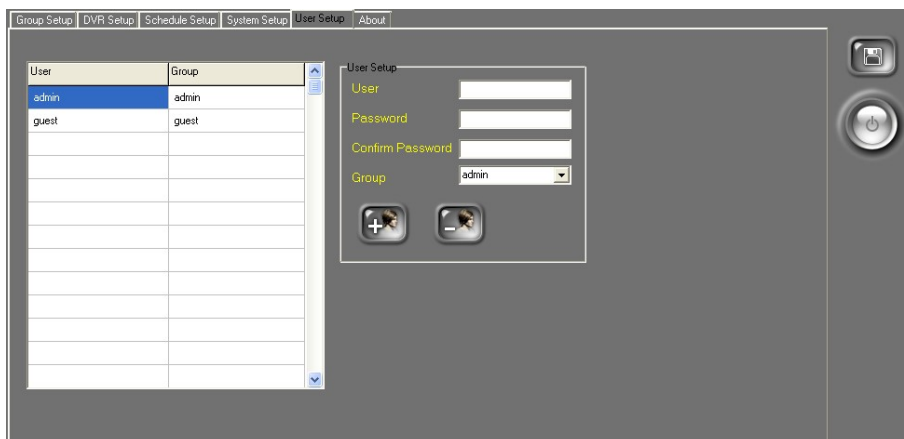
- iii. After complete the setup, please click  button to save the setting
and press  to exit System Setup page.


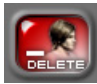

E. USER SETUP

CMS supports simple security management.



- i. Click to get into user setup page, then select **User Setup** tag.



- ii. On the right side of the user setup page, please fill in the user name, password and select the group. Click  to add new user and click  to delete.
- iii. After configuration, please leave user setup page. In the live-viewing page please click  to login/logout.

V. REAL-TIME MONITOR





A. REAL-TIME IMAGE

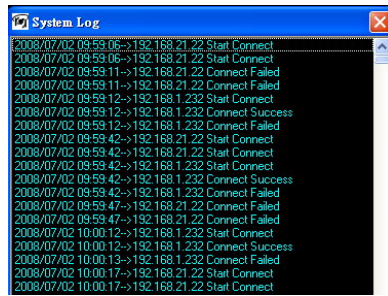
DVR Central Management System (CMS) is software which can control Multi-DVRs. Due to CMS is designed by “Group” concept, the software can combine different channels within different DVRs into ONE Group to perform real-time monitor. The image is shown in the following:



B. BUTTON INSTRUCTION of REAL-TIME IMAGE



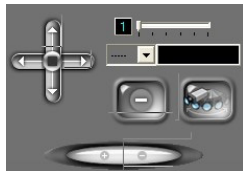
- i.  : When connected DVR has triggered events, these triggered events will be presented within this block.
- ii.  : Double-click the left button of the mouse on the triggered event of the Event List block, the live image will be transferred into the playback mode of this event. Click on this button back to the Live Image mode.
- iii.  : Snapshot. Click the button can snapshot the image of the screen.
- iv.  : System Log. Press this button can display the software system log which is including CMS start and close time and so on. The system log example is shown as follows,



- v. : When click on the view, the digital zoom panel will be displayed to control the digital zoom in/out.



- vi. : Snapshot. Select the view first and then click on this button to save the view image.



- vii. : PTZ controller interface. Provides Focus 、 Zoom and IRIS.



- viii. : Emergency Record Status Light.



- ix. : Close the program.



- x. : Get into administrator page.




- xi. : Recorded video playback



- xii. : Emergency REC. ° Click this button to start recording immediately in emergency situation. To stop recording, please click the button again.




- xiii. : Download the file. Click this button to download the specific time period file within the Group. After finish selecting











the Start and End Time, please click  button to start download



- xiv. : Minimize the program / Full Screen mode °

Minimize the program to the windows toolbar. / To exit the full screen mode, use “Esc” or right-click the mouse.

xv.  E-MAP: E-Map can be setup after click this button.

xvi.  /  /  /  /  Split Screen : This software can display Max. 16 views. Press these four buttons to switch 36 views , 16 views , 9 views , 4 views  and 1 view  .

VI. EMERGENCY RECORD & DATA BACKUP



Click button to enter Emergency Record mode. Moreover, click

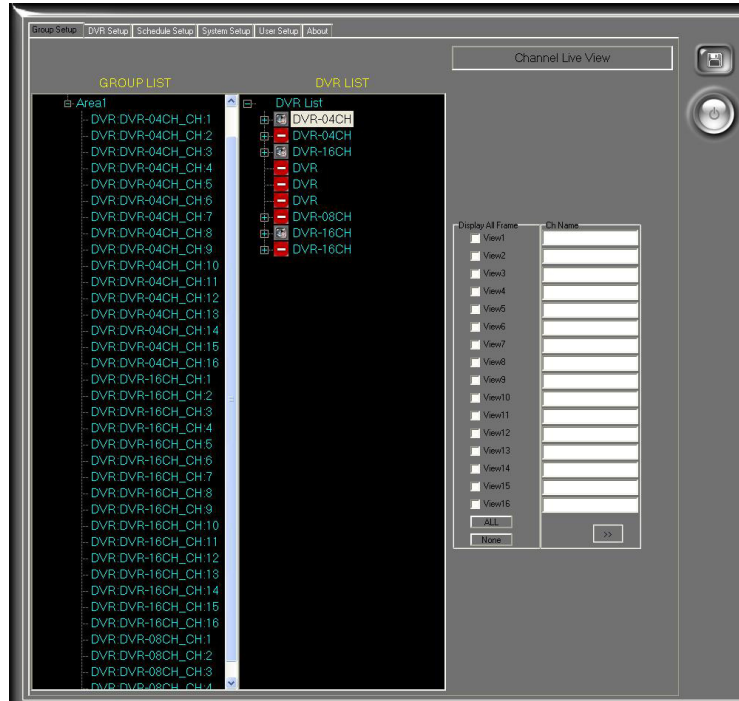


button to perform data backup. The operating instruction is shown in the following.

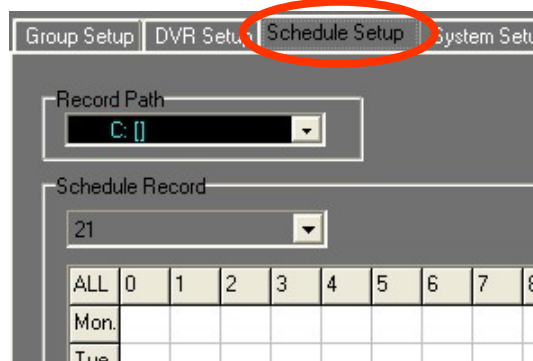
A. EMERGENCY RECORD





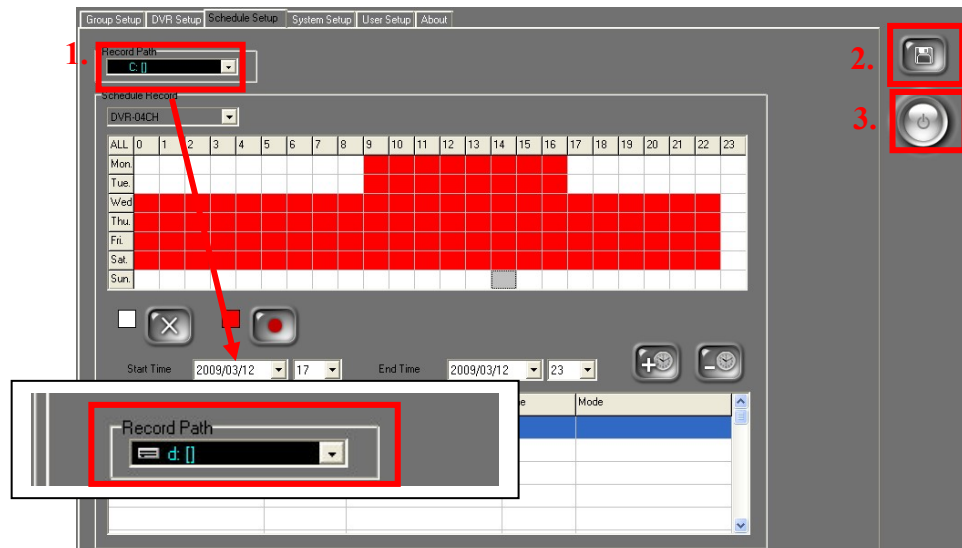
- i. Before operate Emergency Record, please click  button to enter administrator page.




- ii. Then, select **Schedule Setup** tag to enter to schedule setup page. As the following image,




- iii. Click on the drop down list of **1**. Record Path block to select the HDD to save the Emergency Record file. After that, click on **2**.  button to save the setting. Finally, click on **3**.  button to exit System Setup page.



- iv. Under the Real-Time Image mode, please click  button to start Emergency Record.




NOTE: This Emergency Record is for GROUP view recording.

When start recording, the  will become red. If the Emergency Record does not stop by the user, the system default for recording time of Emergency Rec. is 5 Minutes.

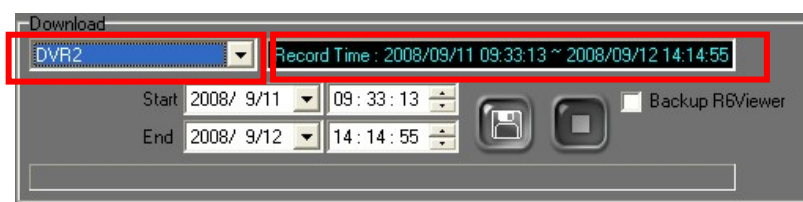
B. DATA BACKUP

The Data Backup of DVR Central Management System is to backup the data from the connected DVR(s).

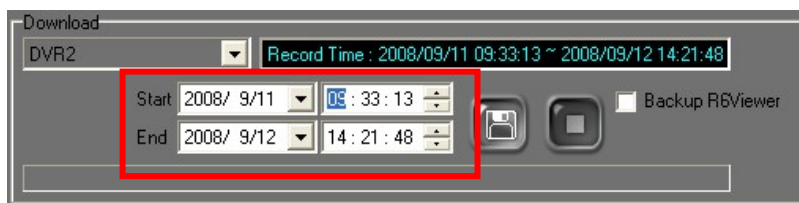
- i. Under the Real-Time Image mode, please click  button to enter Download page.




- ii. Click DVR drop down list to select the backup DVR and then, it will display the DVR recorded time period on its right hand side.



- iii. Select the Start and End backup time.




iv. Click  button to select data saved folder and then click



to start backup.



NOTE: 1. If the user wants to stop backup immediately during

the backup period, please click  button to stop it.


2. Each backup file will be named as START TIME.

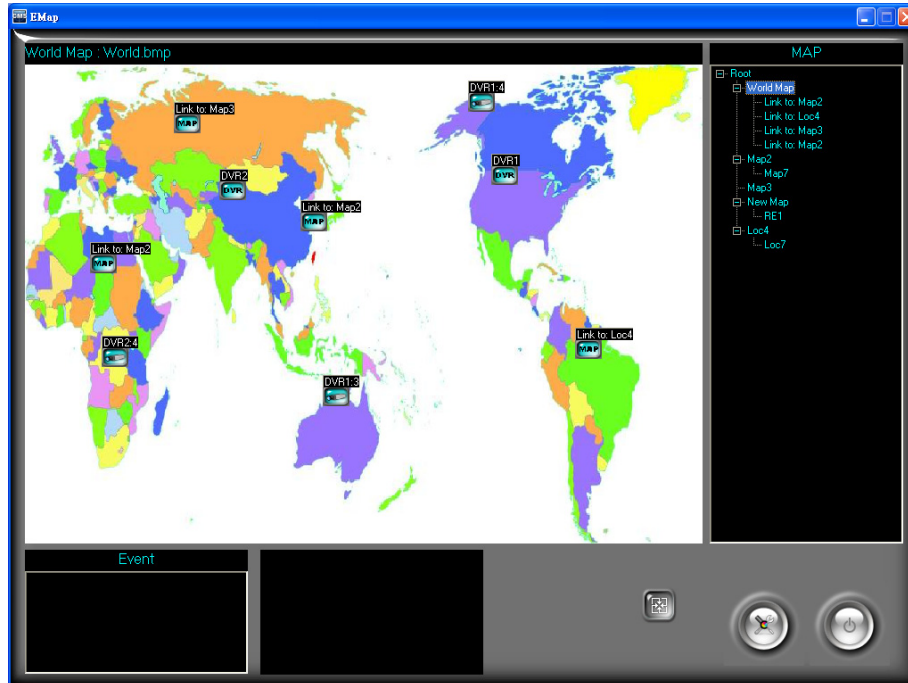
For example:  20080630154009.264
264 檔案
48,854 KB **(20080630154009.264)**




3. Click “Backup R6Viewer” option can download R6 Viewer software.

4. The downloaded *.264 file has to be played by CMS software and R6 Viewer software. It has not supported by other media player.




VII.E-MAP

Click  button to entry E-Map setup page.



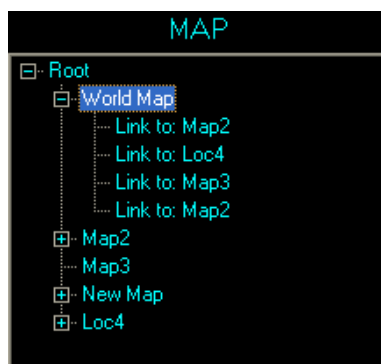
- i.  **Setup:** E-MAP setup page.
- ii.  **Exit:** Exit E-MAP.
- iii.  **Refresh:** Refresh E-Map.

A. E-Map Monitor

When DVR, Camera or Sensor of the E-Map detect disconnection , motion  and alarm , the icons will be flash and the events will be added into the event list.

B. Map Tree

This will present the structure of the E-Map.






C. Event List

When disconnection, motion and alarm are triggered, the events will be added to the event list.



D. Live Monitor

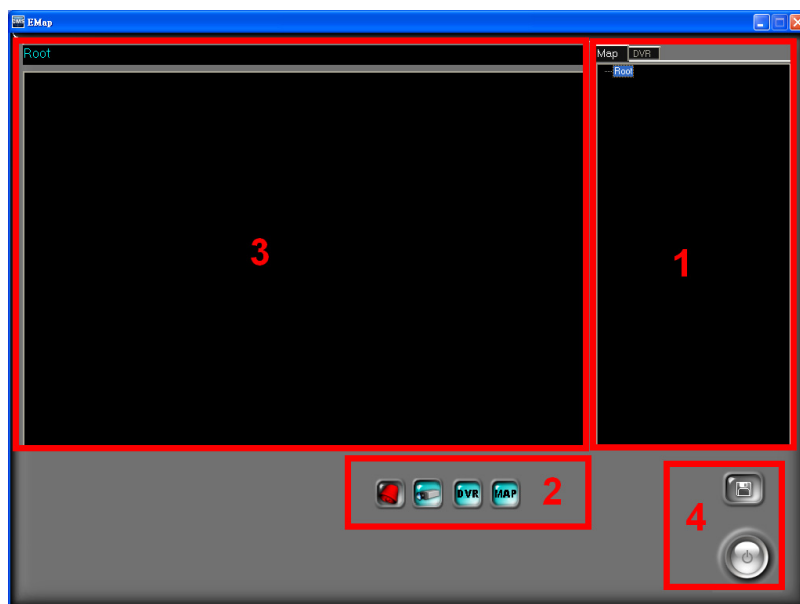
Click the left button of the mouse on the sensor icon , camera icon

 or DVR icon , it will present the live image on the bottom of the screen. Moreover, double-click these icons will entry to the full screen mode.

E. E-Map Setup

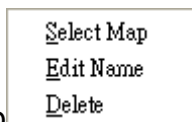


Click button to entry the E-Map setup page.



In the following, the screen of E-map setting will separate into four blocks to instruction.

Block1: The setup DVR which connected by CMS software. Moreover, click the tags **Map** **DVR** to switch the setup E-map and the connected DVR. Click the right button of the mouse on the E-Map can select the



map, edit the name and delete the map.

Block 2: The icon of devices which can drag and pull to the map.



: Add the alarm in the map. Click the icon can see the live view of alarm device.



: Add the camera in the map. Click the icon can see the live view of the camera.



: Add the DVR in the map. Click the icon can see the live view of the DVR.



: Add the map in the map. Click the map icon will link to another map.

Block 3: It presents the selected E-map image and node.

Block 4: The function instruction of the following button.



: Reserve the setup



: Exit the E-map page.

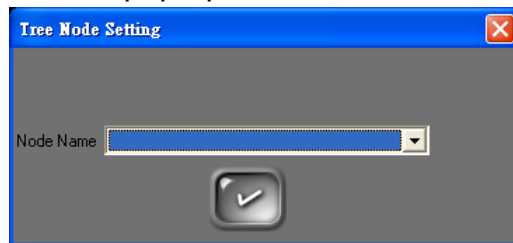
Add the E-Map

The fundamental operating steps of add a new E-Map

- i. Select the Node first to add a new E-Map. Such as "Root" node in the beginning.



- ii. Drag and Pull of block 2 to block 3 and the following dialogue box will pop-up.

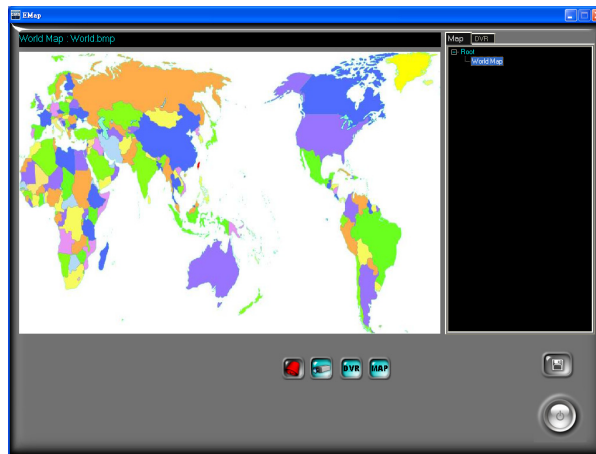


User can click button to complete the setting or click the drop down list to select the map. After click the drop down list, then select "Create New Map (Not Link to Existed Map)" option. The following dialogue box will pop-up.



Click button to select the image of the map and key in the name of new map in Node Name .

iii. Finally, click  to complete the new map setting.

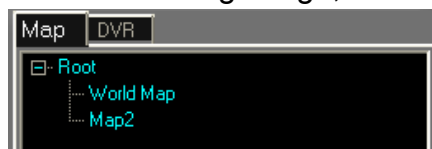


If the user wants to create the new E-map, please follow the above three steps.

Add the E-Map Link


The fundamental operating steps of add the link for exist maps. (* Make sure there are more than two maps)

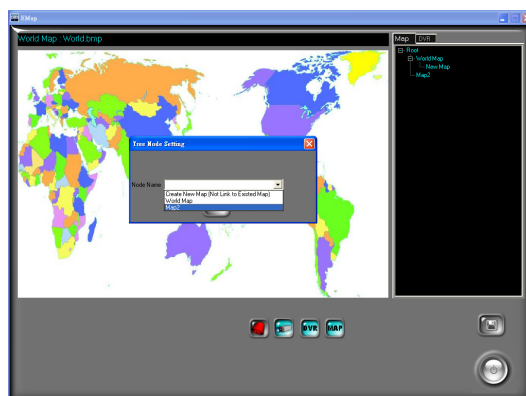
As the following image, there are two maps that have setup




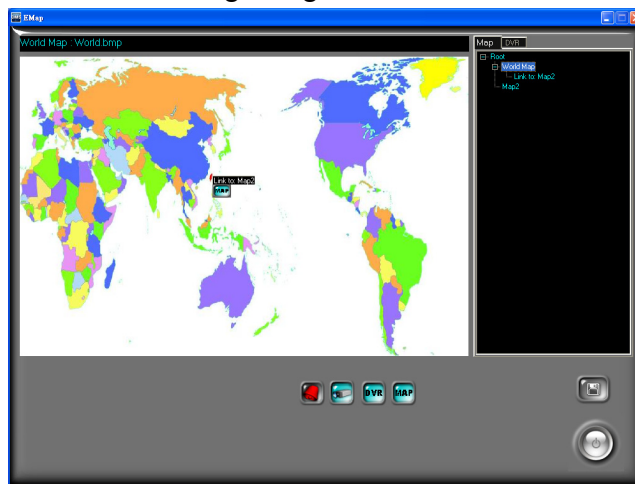
If the user wants to create a link of one map into another map, such as the link of “Map2” in “World Map” in above image, please follow the following steps.

- i. Please click the map in Block 1 which wants to add the link from another map. (i.e. World Map)

- ii. Drag and pull the  icon form Block 2 to Block 3, and then select “Map 2” in the drop down list of Node Name.



- iii. Finally, click  button to complete the map setting.
- iv. As the following image, there is a link of “Map2” in the “World Map”.



Add the DVR

The fundamental operating steps of add the new DVR.

- i. Select the map on Block 1 first. Such as “World Map”
- ii. Drag and pull the  icon from Block 2 to Block 3.

- iii. From the pop-up window, select the DVR



- iv. Finally, the new DVR icon  will be shown within the E-Map.

Add the Camera

- i. Select the map on Block 1 first. Such as “World Map”
- ii. Drag and pull the  icon from Block 2 to Block 3.

- iii. From the pop-up window, select the DVR



first, and

then select the camera




in the following.

- iv. Finally, the new camera icon  will be shown within the E-Map.


Add the Sensor

i. Select the map on Block 1 first. Such as “World Map”

ii. Drag and pull the  icon from Block 2 to Block 3.

iii. From the pop-up window, select the DVR .

iv. Finally, the new sensor icon  will be shown within the E-Map.

Click  button to reserve the setup.

VIII. VIDEO PLAYBACK

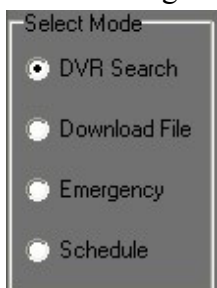


Please click to enter Video Playback mode.



A. VIDEO PLAYBACK

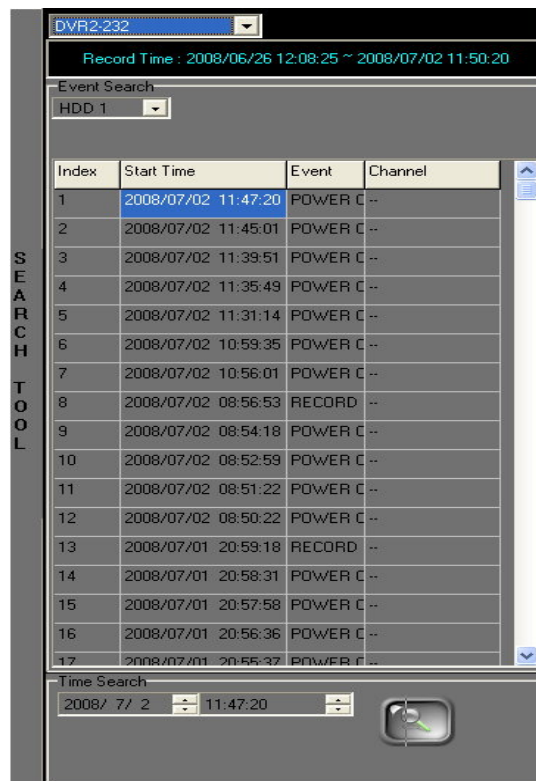
Please select the Video Playback mode. There are DVR Search, Download File and Emergency Rec. and Schedule playback modes. For the following image,



i. DVR Search



- a. Under the DVR Search playback mode, move the mouse to the right of the screen. SEARCH TOOL will pop-up. For the following example,



- b. Select the DVR first, then it will display the recording time of the selected DVR.

- c. After selected the playback DVR, video playback will be operated by doing Event Search and Time Search.

c-1. Event Search

- c-1-1. Select the playback HDD of DVR .

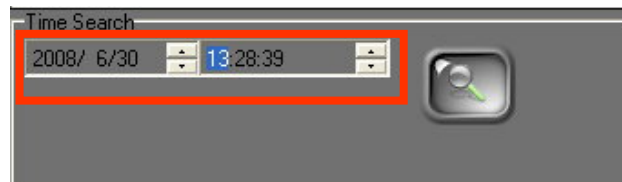
- c-1-2. After selected the HDD, it will display all trigger events to the following table. Double-click the left button of the mouse on the trigger event. For the following example,


Index	Start Time	Event	Cha
1	2008/07/02 11:53:44	POWER C --	
2	2008/07/02 11:51:38	POWER C --	
3	2008/07/02 11:47:20	POWER C --	
4	2008/07/02 11:45:01	POWER C --	
5	2008/07/02 11:39:51	POWER C --	
6	2008/07/02 11:35:49	POWER C --	
7	2008/07/02 11:31:14	POWER C --	
8	2008/07/02 10:59:35	POWER C --	






- c-1-3. After finish the above setting, the playback screen will play the selected event video.



c-2. Time Search



- c-2-1. Please select the playback start time within the Time Search block.



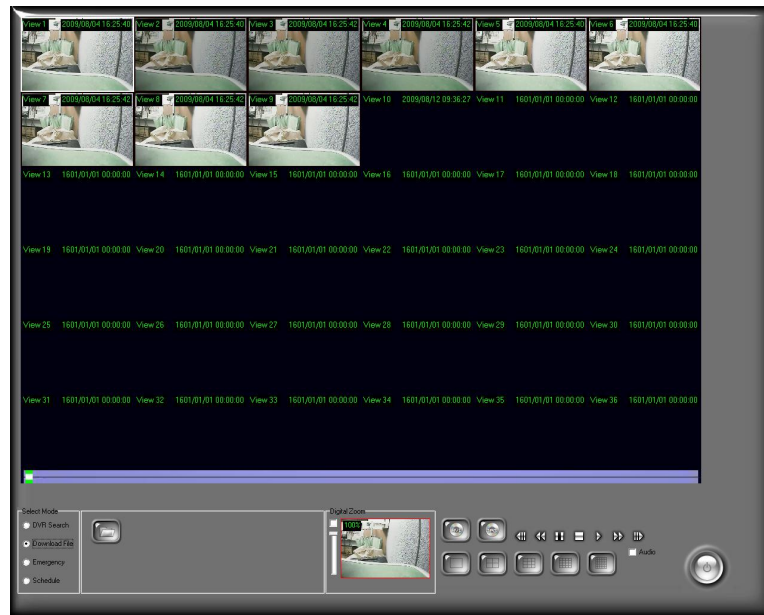
- c-2-2. After finish the time setting, please click  button to start video playback.

- d. Click  /  /  /  /  button to switch the playback split screen 1 CH/ 4CH/ 9CH/ 16CH/ 36CH.


- e. Click  to stop playback. Moreover, click  to start playback.

- f. Use  &  to fasten the forward and rewind playback speed.(NOTE: Forward and Rewind playback only display I Frame.)

ii. Download File

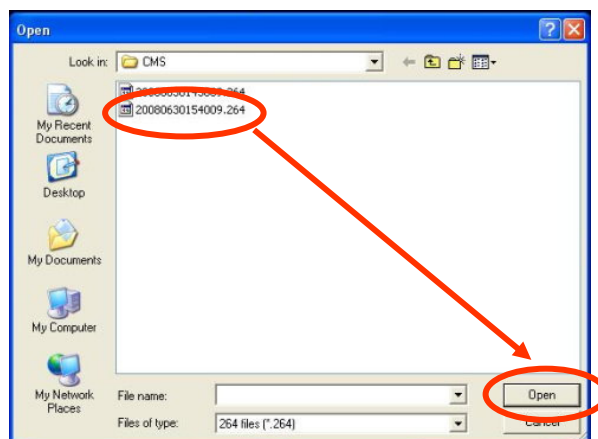


- a. Select Download File option within Select Mode block. Then,

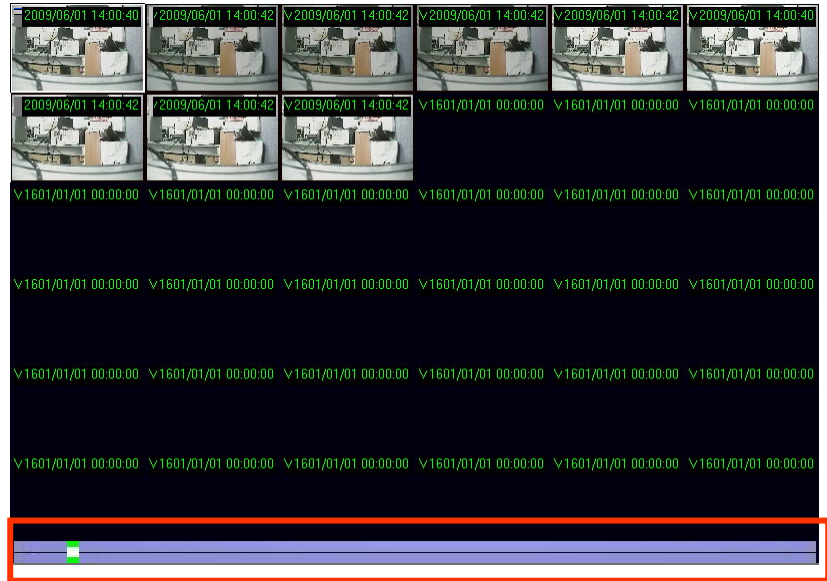
click  button to open the playback file.



- b. Select the file first and then click **Open** button to start playback.



- c. Within the playback image, the user can use the seeking bar which is under the playback screen to find out the specific time-point. As the following example,



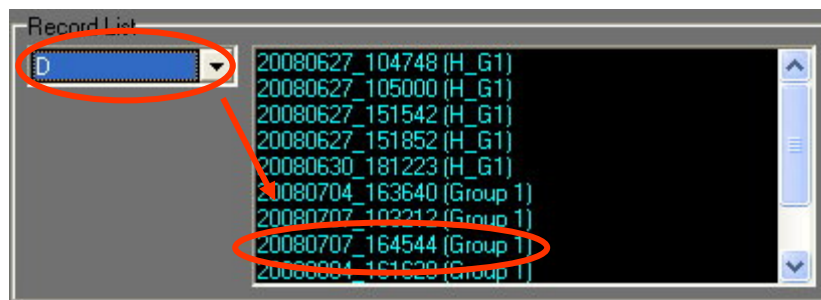
iii. Emergency Rec.



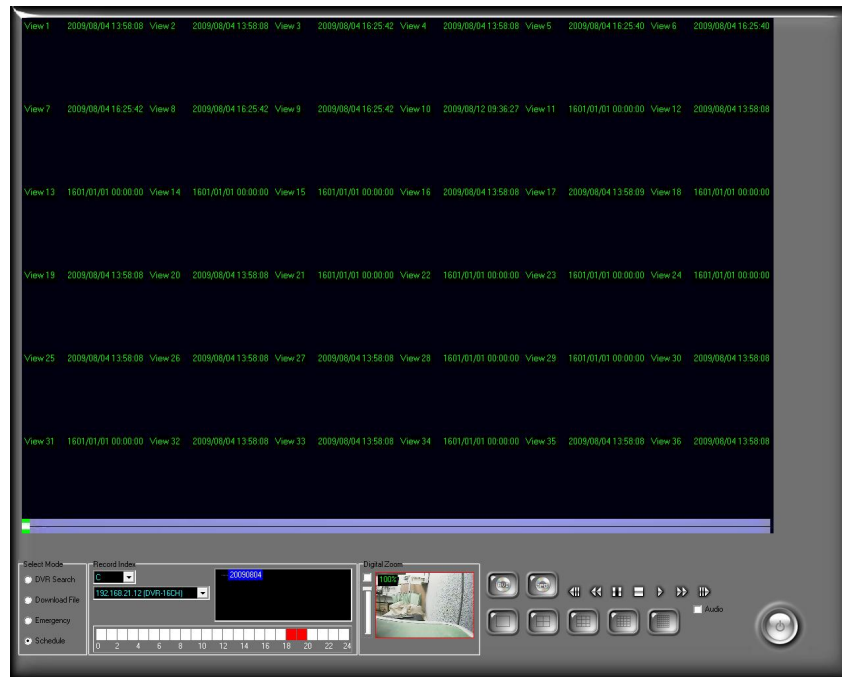
- a. Select Emergency Rec. option within Select Mode block. The Record List block will pop-up on the left of the Select Mode block.



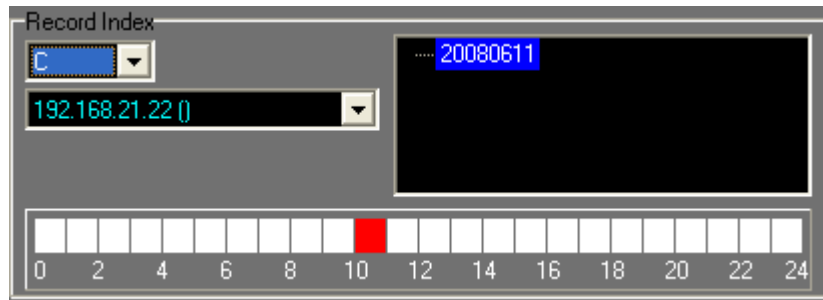
- b. Select the HDD which saved the Emergency Record file, and then double-click the left button of the mouse on the Emergency Record file which wants to playback.



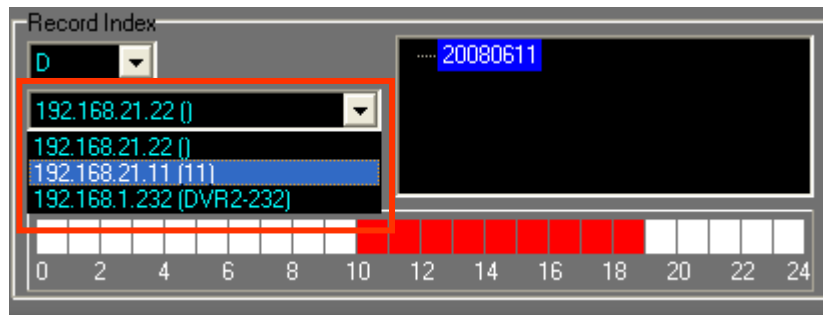
iv. Schedule



- a. Select schedule option within Select Mode block. The Record Index block will pop-up.

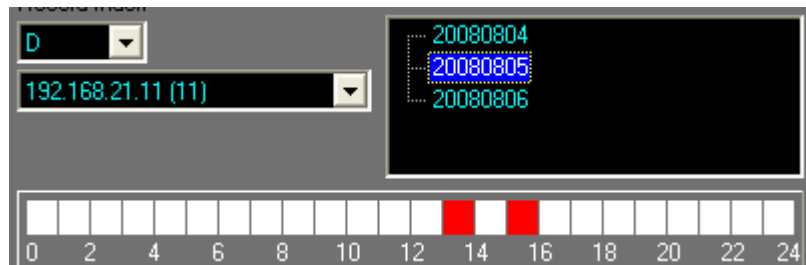


- b. After selected the hard disk, the drop down list will display the DVR(s) which has reserved the data of Schedule Record.



- c. After selected the DVR, it will display the date which possesses the data of Schedule Record. As the following image, clicking the

different date will present the correspondence Schedule Record time period. (NOTE: The time period will become red while having Sync Record data.)



- d. Finally, double-click the left button of the mouse on the red time period to perform the video playback.



B. EXPORT IMAGE

Image data can be export as JPG or AVI format.

- i. Export as JPEG format:



- a. Click button. It will show the following dialogue box.



- b. The default filename will be named as “Img_channel_yyyymmdd_hhmmss.jpg” format. The user can decide the filename and the saving path.

- ii. Export as AVI format:



- a. Click button. It will show the following dialogue box.




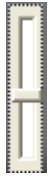

- b. The default filename will be named as “AVI_yyyymmdd_hhmmss.avi” format. The user can decide the filename and the saving path.

IX. DIGITAL ZOOM

By enabling the digital zoom function, user can zoom in/out the image to get proper view. Digital zoom can be functionalized in live-viewing, playback viewing. The following figures refer to the digital zoom panel.



There are three main components of digital zoom panel.

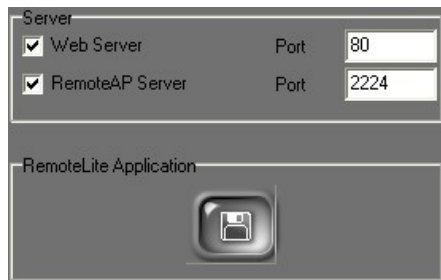
- i.  : Preview window. The image or video in the preview window is not live, the image frame will be updated within a time interval. The red frame indicates the live-viewing window, and the number of the left-down corner indicates the zooming rate.
- ii.  : Digital zooming bar. By moving the control bar up or down, the live-viewing and preview window will be zoomed in or out. The zoom rate is from 100% to 1000%.
- iii.  : Zoom status. By un-check this function, the image or video will be displayed in the original size.

X. REMOTE CONTROL

Through activating the function of Web server, Remote program server and RemoteLite program, DVR Central Management System (CMS) provides web server browser, remote program and remote lite program for user's demand.




Click button to the administrator page, select **System Setup** tag to enable remote connection mode.



A. Web Server

Enable Web Server will allow web browser to connect to DVR Central Management System (CMS) server to monitor real-time image. Please refer to instructions in the following.

- i. Connection Method: In Windows Vista, please click right click on the IE web browser and select "Run as administrator" to start the program. For example, within Internet Explorer 7, input the address: <http://192.168.1.104/> (which is seen in above image ).
- ii. Connection Page: After successfully connected, the user will see the operating interface shown in the following:

Online Monitoring

You can monitor the real time images from the remote server.



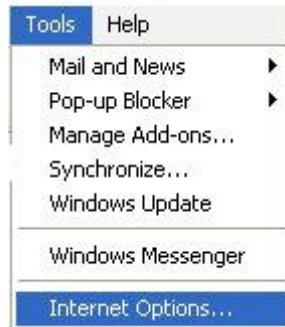
Click "Install" button to install HRemoteLiteX.cab

- iii. On-Line Monitoring: The function has to operate with "Remote AP Server" enabled. If the OS has installed Windows XP or Windows Vista, please perform the following internet options

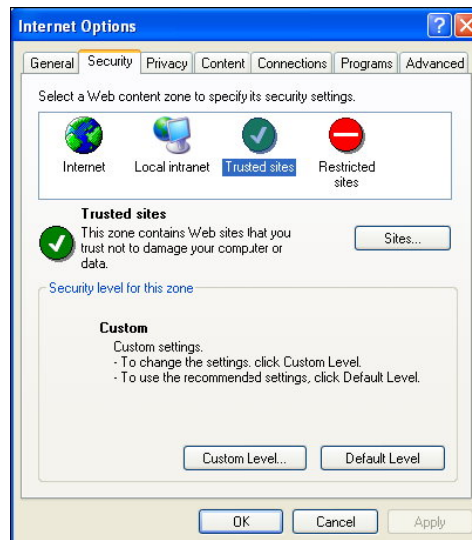
setting steps:



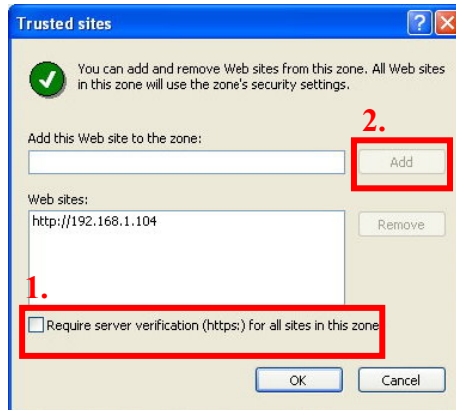
b. Click the “Tools” → “Internet Options”



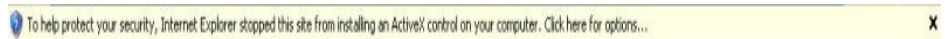
c. Click “Security” → “Trusted sites”



c. Click sites, then unclick the option in Step 1. Input the IP address of the recording software server in the “Add this Web site to the zone” area, then click “Add” button (Step 2) to complete the trusted sites list. Finally click “OK” to exit.



- d. After entering “Online Monitoring”, please click “information bar” when enter the first time. (The prompted information is normally located under the browser).



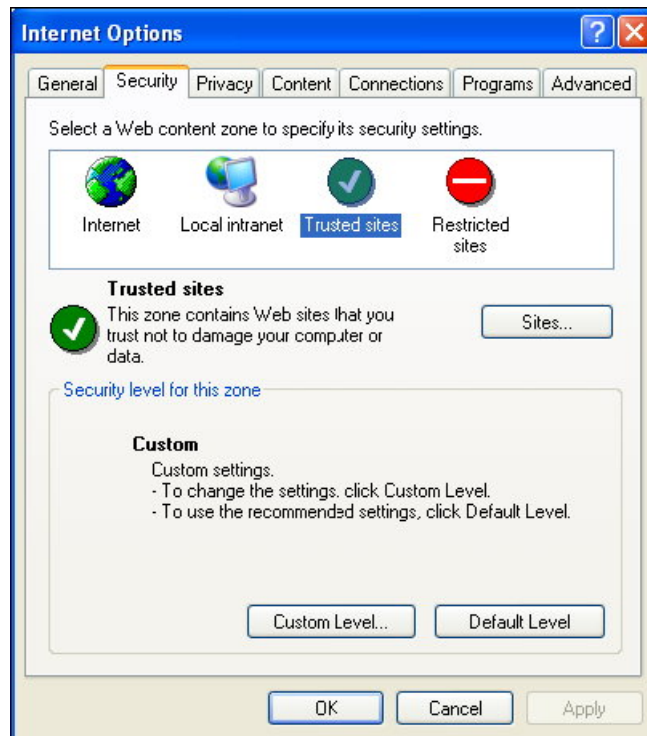
- a. Within the pop-up drop down list, please click “Install ActiveX Control...”.



- b. Click “Install” to perform the installation.



- c. If the installation does not work, please click “Tools” → “Internet Options...” → “Security” tag → “Custom Level”

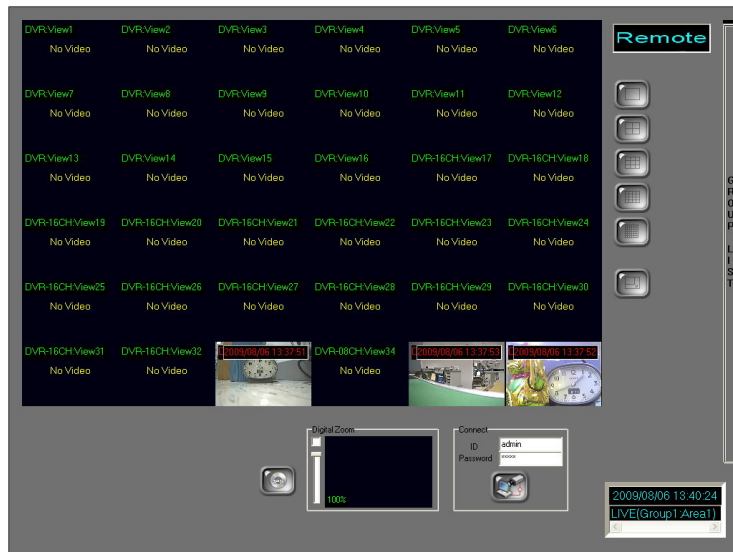


Security Settings window will pop-up, and the user has to change the following options:


-  Download signed ActiveX controls
 - ☐ Disable
 - ☐ Enable
 - ☒ Prompt→ Set for “Prompt”
-  Download unsigned ActiveX controls
 - ☐ Disable
 - ☐ Enable
 - ☒ Prompt→ Set for “Prompt”
-  Automatic prompting for ActiveX controls
 - ☐ Disable
 - ☒ Enable→ Set for “Enable”
-  Initialize and script ActiveX controls not marked as safe
 - ☐ Disable
 - ☐ Enable
 - ☒ Prompt→ Set for “Prompt”

After complete the setup, please repeat Step d~ Step f.

- h. After the installation, the online monitoring page will show as following:

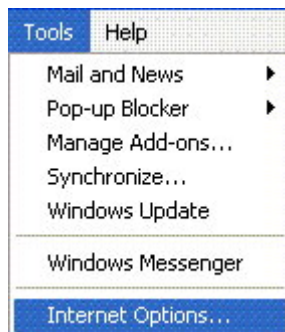


- i. Input the correct User Name and

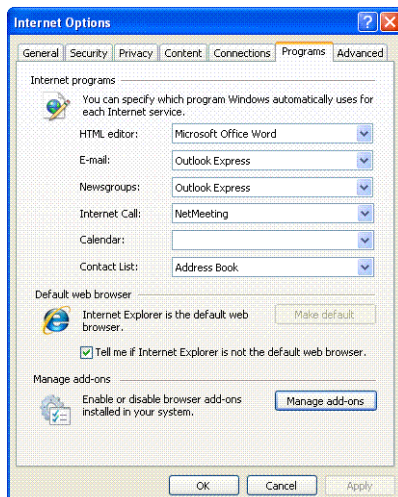
Password , and then click  to connect with the camera.

- iv. Remote Online Monitoring Control: Please refer the following steps to remove Online Monitoring software

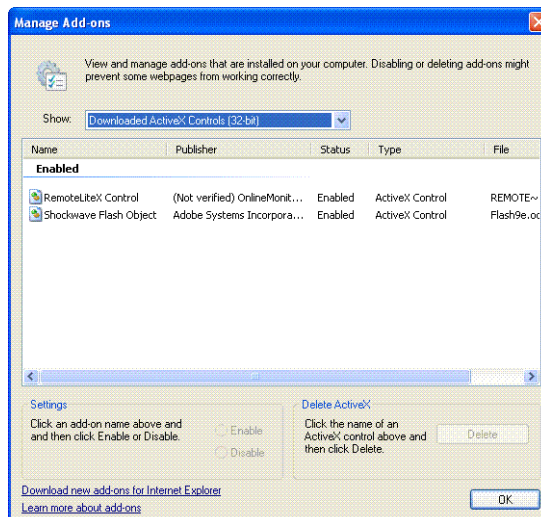
- a. Select “Tools” → “Internet Options...”



- b. Select “Programs” tag → “Manage Add_ons...”



- c. Select “Downloaded ActiveX Controls” option, and then choose “HRemoteLiteX Control”, finally click “Delete” button and “OK”.



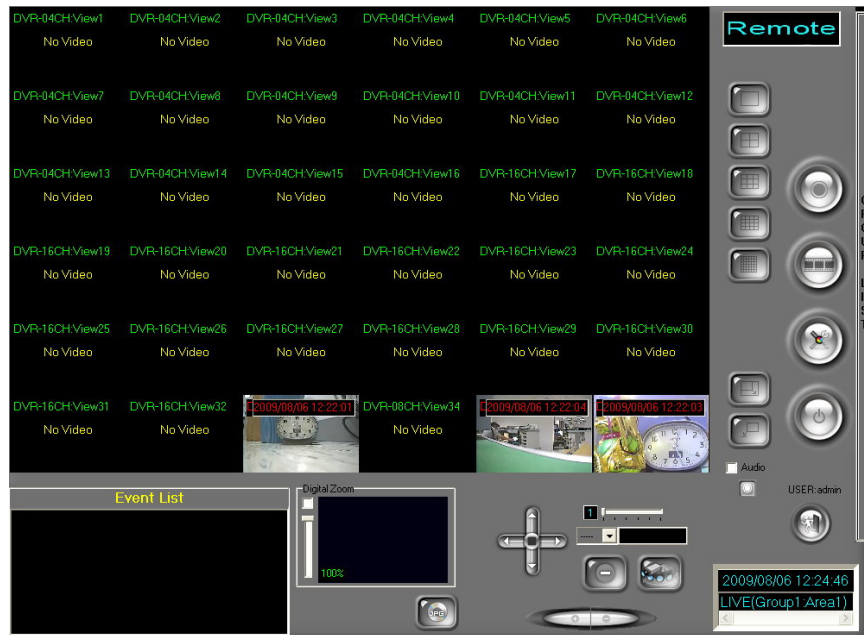
Internet Explorer 6 、 Windows XP or Windows 2000 :

- a. Open the OS installation folder, such as “C:\Windows” or “C:\WINNT”.
- b. Open “Downloaded Program Files” folder.
- c. Right-click the mouse on “HRemoteLiteX Control” option and select “remove” to delete Remote Online Monitoring Control.
- v. Download the remote program: When select “Download remote program” from main page, the user can download the installation file of remote program.

B. Remote Program








By starting remote program, it enables Remote Program to connect with the PC Server which is using DVR Central Management System (CMS). Remote program allows user to remotely “View Live Video”, “Setting”, and “Playback”. The operation of Remote Program is similar to DVR Central Management System (CMS) Server.

- i. Program Installation: Remote software program has been installed when installs DVR Central Management System (CMS) into PC.
- ii. Program start:
 - a. Remote program was installed with DVR Central Management System (CMS) installation: Select “Start” → “Program” → “CMS Software ” → “Remote” to start the program.
 - b. With Windows Vista, please right-click the remote control program, then select “Run as administrator” to start the program.



- iii. Connection Setup: Please refer to following steps.
- a. Before the remote program connected, please insert the Server IP, User and Password of the main CMS.



- b.  : Full Screen Mode. To exit the full screen mode, please right-click the mouse.
- c.  : Minimize the program.
- d.  : Auto switching channel. Users can set different auto switching combinations.
- e.  : Manual recording. User may start recording immediately. To stop recording, please click the recording button again.
- f.  : Playback mode. Display the recording data of the server.
- g.  : Setup Page.
- h.  : Exit the remote program.

C. Remote Lite

Remote Lite is a CMS remote software which is different from DVR Central Management System (CMS) Server. Basically, Remote Lite is designed for live-viewing only. It is not allowed user to playback or to change any setting. The Remote Lite is exported by the DVR Central Management System (CMS). User can select each channel or part of them to export. In Windows Vista, please right-click on the remote lite



program, then select “Run as administrator” to start the program.



Click button to connect with the CMS Server, as the following image.



APPENDIX A: GRAPHIC CARD TEST TABLE

The following list presents the graphic cards which have been tested with Network Recording Software Premium series.

OS		
Windows 2000	ATI	RADEON 7500
	NVIDIA	GEFORCE 6200
Windows XP	ATI	RADEON 9200, RADEON 9550, RADEON XPRESS 200
	NVIDIA	GEFORCE 6200, GEFORCE 6600, GEFORCE 7100, GEFORCE 7300, GEFORCE 8500, GEFORCE FX 5200
Windows Vista	ATI	RADEON XPRESS 200M, RADEON HD 2400 PRO
	NVIDIA	GEFORCE 8500
	Intel	G33

NOTE 1: All the graphic cards which are shown in above table have to update their driver to the latest version. Please go to ATI, NVIDIA or Intel official website to update the driver.

NOTE 2: By using Windows Vista, due to Intel G33 Driver (Version: 7.14.10.1461) from its OEM have not supported Vista DirectX 10 yet, it cannot display the image within Overlay mode while operating Dual-Monitor. Therefore, this caused problem still wait for the solution from its OEM.